



2021

annual report

www.pebblesproject.co.za





Chairperson's Report 2020 - 2021

When I compiled my Chairperson's Report at this time last year, we were still getting to grips with the impact of COVID-19, and the accompanying lockdown, on both Pebbles and our day-to-day lives. One year on, COVID-19 is still with us, and in some ways far worse than a year ago, with continuing variants and some countries struggling to contain the effects of the pandemic.

Although in South Africa, we are yet to start a mass vaccination programme, the managed lockdowns imposed seem to have had a positive effect on containing the spread of the virus, but at a severe cost to our economic health.

Under such circumstances, the continued success of the Pebbles Project is truly wonderful and inspiring. The Senior Management Team, under the skillful guidance of the founder of Pebbles, Sophia Warner, has performed magnificently. This included new staff appointments, promoted from within Pebbles, who have risen to the challenges they faced and ensured a smooth transition.

In this respect, I also wish to thank my fellow Trustees for their continued wise counsel and advice, bringing together our combined experience to guide the Organisation through these turbulent times.

To our funders and donors, both large and small, our heartfelt gratitude for your continued support. To the new partners who have joined us recently, thank you for the faith you have shown in Pebbles.

But most of all, our thanks to our amazing staff for their dedication, commitment and unwavering enthusiasm for our beneficiaries, the Pebbles children.

Stephen Digby
Pebbles Project Trust Chairperson

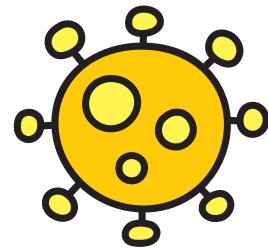


CEO's Report 2020 - 2021

As a 'glass-half-full' kind of girl, I found the past year a unique challenge, a puzzle to be solved with solutions to be found. The day after South Africa went into hard lockdown in March 2020, Pebbles went into overdrive with an emergency feeding scheme and over the following 8 months we distributed over one million meals to children and families in the Western Cape. We partnered with local municipalities, other charities and community groups to distribute ready-cooked meals or food parcels to those that needed it most. Our education team, social workers and health professionals also stepped up, delivering learning packs to the children at home and offering social and medical support to people through the hard times. The financial and moral support that we received from donors, supporters, friends and family was overwhelming and Pebbles was able to thrive during a time when many other organisations struggled.

Thank you to the entire Pebbles team for turning a potential disaster into a success, and thank you to our board of Trustees in South Africa and board of Directors in the UK for your constant support and guidance.

Our thoughts and love continue to surround our staff members who lost loved ones during the past year.



Sophia Warner
CEO



Pebbles Project Trustees 2020 – 2021

Stephen Digby (Chairperson), Peter Blaine (Treasurer), Zanele Njapha, Lucy Warner, Leigh Zwaan, Sophia Warner

Senior Management Team 2020 – 2021

Sophia Warner (CEO), Marileze Buys (Deputy Director), Estee Heyns (Chief Administrative Officer), Samantha August (Chief Operations Officer), Michael Petersen (Financial Manager), Angela du Plessis (HR Manager)

Pebbles Project UK Directors 2020 – 2021

Ray Abercromby, Elizabeth Clifton, David Wainwright, Edward Powell, Sophia Warner





Through an integrated developmental approach, the Pebbles Project aims to enable children and young adults from agricultural communities to reach their full potential at each appropriate educational phase to ultimately enable them to become participating and responsible members of society.



Organisational outcomes for the Pebbles Project:



1. A child who has reached her/ his educational potential at each appropriate life phase
2. A child who is healthy and well-nourished at all times
3. A child who demonstrates appropriate social and emotional behaviour at the relevant life phase
4. Safe and protected environments throughout all educational phases

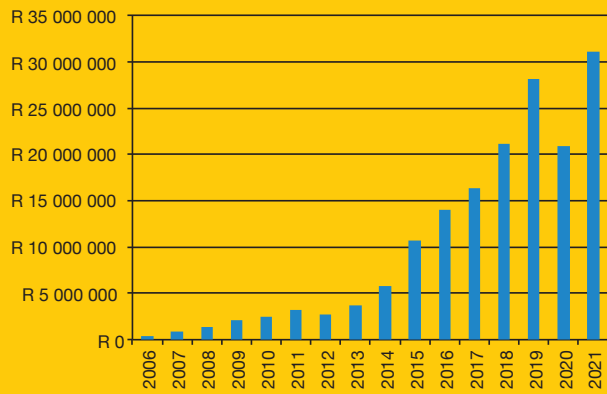
2020 – 2021 Achievements and Milestones

- Over one million meals were distributed by our Pebbles kitchen during lockdown to children and families on farms and in informal settlements. Thank you and congratulations to Kitchen Manager Dominic and the entire kitchen team for this achievement.
- A brand new Mobile Health Clinic was launched for rooibos tea farmworker communities in Clanwilliam, funded by Twinings 'Sourced with Care' responsible sourcing programme.
- Internet and Wi-Fi were provided on 9 Stellenbosch farms for the children to be able to access online educational support from our team of teachers.
- Every child received a box full of age-appropriate stationery and educational resources.
- Pebbles was able to guarantee jobs throughout lockdown for all of our staff, thanks to our loyal and accommodating donors.
- Over R31 million was raised throughout the year.
- A major organisational and programme restructuring process started, to align our programmes with the developmental phases in a child's life.
- New online financial management, HR, donor and beneficiary systems were implemented, to streamline our processes.

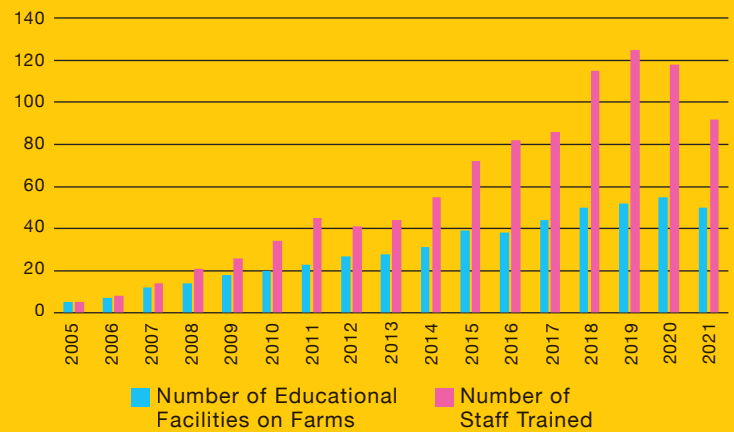
| The New Pebbles Framework 2021 | <div> <div>EARLY CARE AND EDUCATION PROGRAMME (ECEP) - FIRST THOUSAND DAYS (FTD)</div> <div>→</div> <div>EARLY CARE AND EDUCATION PROGRAMME (ECEP) - EARLY CHILDHOOD DEVELOPMENT (ECD)</div> <div>→</div> <div>SCHOOL ENRICHMENT PROGRAMME (SEP)</div> <div>→</div> <div>EARLY ADULTHOOD PROGRAMME (EAP)</div> </div> | | | |
|--|---|--------------|---------------|----------------|
| | CONCEPTION TO 2 YEARS | 2 TO 5 YEARS | 6 TO 18 YEARS | 15 TO 25 YEARS |
| Maternal Health Education (Baby Box) | • | | | |
| Facilitator Training | • | • | • | |
| Facilitator On-Site Support | • | • | • | |
| FTD Bonding and Attachment Caregiver Training | • | | | |
| Mobile Resource Centre | • | • | | |
| Special Educational Needs (SEN) Support | • | • | • | |
| Learner On-Site Support | • | • | • | |
| Maths Support (FACET) | | | • | |
| Literacy Support (FACET) | | | • | |
| Library Services (FACET) | | | • | |
| Computer Literacy (FACET) | | | • | |
| Art (FACET) | | | • | |
| Sport and Recreation (FACET) | | | • | |
| Educational Outings (FACET) | | | • | |
| Leadership Development (FACET) | | | • | |
| Learner Coaching Initiative (FACET) | | | • | |
| Sexual Health Education | | | • | |
| World of Work (WOW) | | | • | |
| Subject and Career Guidance | | | | • |
| Further Education Enrolment and Placements | | | | • |
| Training and Support | | | | • |
| Social Work Support | • | • | • | • |
| Parent Training | • | • | • | |
| Farm Community Action Committees | • | • | • | |
| Primary Health Care | • | • | • | • |
| Dental | • | • | • | • |
| Wellness | • | • | • | • |
| Adult Sexual Health Education | | | | • |
| Daily Meals and Snacks (Stichting Clouds Foundation) | • | • | • | |
| Nutrition Intervention for Children at Risk | • | • | | |



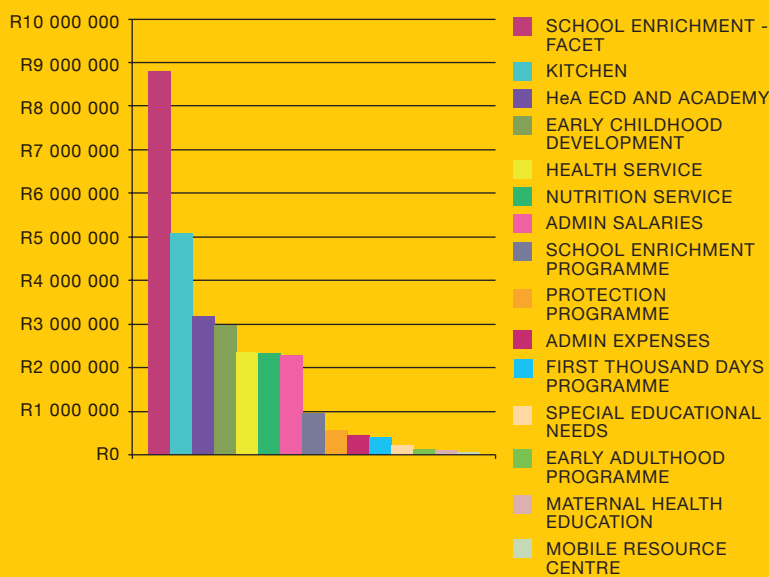
SA and UK Income 2006 - 2021



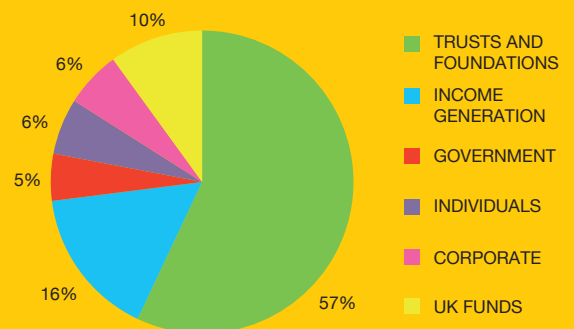
Number of Facilities and Staff Trained 2005 - 2021



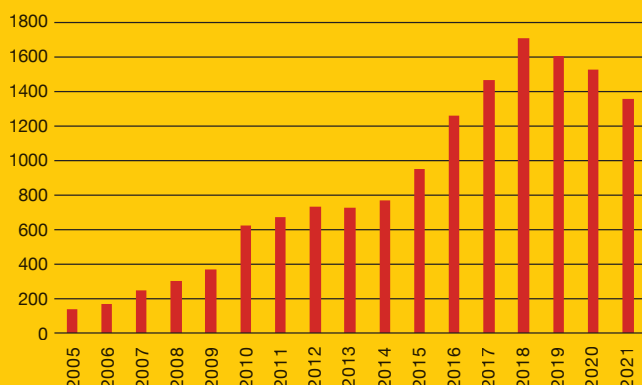
Expenditure 2020 - 2021



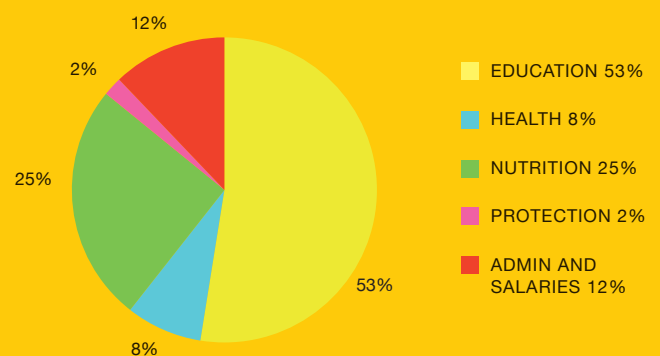
Income Sources 2006 - 2021



Beneficiary Numbers 2005 - 2021



Programme and Admin Expenses 2020 - 2021



Our Numbers

Total number of children aged 0 – 25 years: **1355**

Total number of ECEP / SEP facilities supported: **50**

Total number of staff trained each month: **92**

Total number of staff employed by the organisation: **93**

Connect with Us

- <https://www.facebook.com/PebblesProjectTrust>
- <https://www.instagram.com/pebblesprojecttrust/>
- <https://twitter.com/PebblesProject>
- <https://www.linkedin.com/company/pebbles-project>



Thank you to our amazing donors and supporters who have helped us through another year.

Adama Foundation Trust, Amanda Davis, Amazon Web Services, Andre du Plessis, Anfest Invest B.V., Angela Lloyd, Annegret Richter, Barbara Beltman, Barnsbury B.V., Bellevue Farm, Benini, Blouberg Rotary Club, Book Dash, Boschendal Wine Estate, Bosman Family Vineyards, Cape Epic, Cape Garden Centre, Cape Town Travel Women's Club, Capreo, Cathy and Kevin Marston, Cathy Milner, Cederberg Kelders (Pty) Ltd, Checkers Food Services, Cherry Crowden, Chin Chin Wines, Christian Crowden, CIM Pack, Citrogold, Clemengold, Cognisant Investment, Colgate, Collison-Jones, Community Chest, Creation Wines, Credo Wealth, Cumnor House School UK, Delheim Wines, Department of Health Stellenbosch, Department of Social Development, Dr Bryony May / Together Against Covid, DripDrop SA, Earl Gregory, ECD-ESRF, Edeka, Edge Capital, Elizabeth Clifton, Enlighten Trust, Ernst Conradie, Eucafrica, Freudenberg SE, Fuchs Foundation, Gately Rotary, Graff Diamonds / FACET Foundation, Grandslots, H. Hauman, Harold Eedes Charitable Trust, Haygrove Heaven, Helderberg Sunrise Rotary Club, Henry Gay, Hermanus Rainbow Trust, Hillebrand, Hope Worldwide South Africa, Imibala Fruit, INET BFA (PTY), Injabulo, Iress, Jannie Mouton Foundation, Jigsaw PR, Joe and Regula Eberhard, Jonathan and Carol Drake, Joostenberg Bistro and Deli, Jordan Winery, JP and Kate Maurel, Juice Revolution, Katherine Roach, Keith Prothero, Kelfords Ford, KFC Add Hope, Kleine Zalze, KVV, L'Avenir, Lebone Paarl Labels, Liyad Child Foundation, Lubanzi Wines, Mammaclinic, Manfred Richter, Marks and Spencer PLC, Melanie Neitzel, Mellon Housing Initiative, Mergon Gap Fund, Michal and Eva Popov, Michael Cornish Charitable Trust, Michel Bronner, Mothers of Enterprise UK, My School, Narollah Trust, National Early Learning and Development Programme Support Fund, Neptun Boots, Neville Howarth, Nina Borgensen, Norval Foundation, Oppenheimer Memorial Trust, Optimi, PEP Stores, Peter and Ros Koch, Platter Wine Guide, Porex Empowerment Trust, PSG Management, Queens Liquor, Rebecca Mueller, Rennie's Farms, RFG Holdings, Rialto Foods, Robert Finlayson, Savinis, Schneier and London (Pty) Ltd, Selma Schwartz-Claus, Tersina Sheih, Shiraz SA, Shoprite Group, Silver Lining Gumboots, Singular Systems, SLR SA, Smile FM, Southern Africa Education Fund, Southern Cross Seafood, Stichting Clouds Foundation, Stichting Contextueel Pastoraal, StreetSmart, Support For Education Fund, Teresa Pohl, The Burgiss Group, The Cape House, The Cape Wine Auction Trust, The Cipla Foundation, The Grand Secretary's Discretionary Fund, The Mountbatten School UK, The Project Wines, Theresa Hall, Thomas Witten Trumpet Runner, Twinings, Universiteit Maastricht, Uthando, Valcare, Veritas Awards, Villiera Wines, Walker Bay Pest Control, Warner Family Wines / Lucy Warner, Western Cape Provincial Parliament, Wine of the Month Club, Wine Tasters' Guild, Wines2Whales, Work for Good Ltd UK, WOSA Hong Kong Over the Rainbow Wine Campaign, WP Industrial Flooring, Yo El Rey Wines, Zuiderkruis Farms

PHOTO CREDITS: Anna Lusty (Made in my Camera), Chris Du Toit Photography, Max Sullivan

ANNUAL REPORT DESIGN WORK: Haumann Smal Design Studio



PEBBLES PROJECT REGISTRATION NUMBERS

Educational Trust: IT 4088/2004 | NPO Number: 049-950 | PBO Number: 930017224 | UK Charity Number: 1123172

www.pebblesproject.co.za | info@pebblesproject.co.za

